



NORTH UNIVERSITY
NEIGHBORHOOD ASSOCIATION

Letter to NUNA from HONK! TX

Dear NUNA,

We, the HONK!TX Organizing Committee, want to give a huge thank you for being a part of the first ever, but almost definitely not the last, HONK!TX.

We kicked it off with a community mini-march up and down Hemphill Park with the 40-member strong March Madness Marching Band from Lexington, KY. We waved and smiled at residents who had come onto their porches to inspect the surprising scene.

“My kids had so much fun,” said Claire Gilder about the march. “My five year old marched behind the whole way, tooting on a harmonica and the two year old rode on Daddy’s shoulders with a tambourine.”

Looking out on Adams Park around 5 p.m. on Saturday, March 12th, the sight was truly inspiring. At its peak, at least a thousand people filled the area, gathering around performance spaces on the basketball court, the median area next to Trudy’s, the Waterloo Cycles lot, the Spiderhouse lot, and the Four Sons’ Quality Cleaners lot. Many more passed through the area all day long.

From noon to around 7 p.m. nearly 20 bands from across the U.S. (and one from Canada!) had the park overflowing

with music genres from as far away as Serbia and as near as New Orleans. Austin’s families, young and old, danced, smiled, and let themselves be swept up in the atmosphere of music and community. It was a space where all were welcome.

Visiting bands truly loved the park and surrounding area. Some bands began to use the park space organically, sometimes moving with the shade or wherever the crowd might be - even marching with the crowds between the performance spaces.

In a testament to the transformation of the space, the area was shared by large numbers of pedestrians and vehicles without incident. Afterwards our ‘Green Team’ made sweeps of the area for trash and recyclables and left the park looking just as lovely as we found it.

Please check out honktx.org and ‘like’ us on facebook - [facebook.com/honktx](https://www.facebook.com/honktx) - to stay posted with ongoing updates and where things will be heading from here.

NUNA, you helped make this festival a reality. We were excited to share your neighborhood with the festival and the rest of Austin. We hope you continue to join us as we march forward to many more happy HONK!TX’s in the future.

Sincerely,

The HONK!TX Organizing Committee

**NEXT NUNA GENERAL
MEMBERSHIP MEETING**

WEDNESDAY

April 13, 2011

5:30 - 7:00 pm

First English Lutheran Church



NEXT NUNA MEETING

April 13, 2011

AGENDA

I. Call to Order

II. Guests:

Officer Josh Metteauer, our ADP Distric Rep

III. Reports

ANC - Bill Bednar

CANPAC - Robert Morris

Historic District- Grooms, Aldridge Place

Development Review- Steven Tomlinson

Membership - Kimberly Renner

Newsletter- Judy Willcott

Parks - Mark Feist & Doug Plummer

Parking - Chris Dial & Doug Plummer

Treasurer - Jan Moyle

Quadrant Leader's Reports- Dick Holland, Mike Riley,

Kimberly Renner, and Rick Iverson

IV. Items Recommended for Action

V. Old Business

VI. New Business

VII. Adjourn

Neighborhood Notes

About Neighborhood Parking

Chris Dial reports that two streets have been approved for NUNA Residential Parking Permits, 2902 Hemphill Park (across the street from Kirby Hall School parking lot) and West 33rd Street between Guadalupe and Hemphill Park.

The Parks Committee

Mark Feist is planning to call a meeting of all who are interested in developing a Master Plan for our parks. He will post a notice of the meeting on the list-serve and on the NUNA website (<http://nunaustin.org>) soon.

Lee Elementary School Notes

The Lee fundraiser held at the 29th Street Ballroom (formerly the United States Art Authority) was a great success, lots of fun, and raised almost \$50,000 for the school.



It's My Parks Day

Despite the cold and windy weather on March 5, Naomi Trejo reports that 27 volunteers came out to help clean up our park, including some volunteers from a unnamed church group. There were enough volunteers that the work was finished early. Thanks to Naomi for volunteering her time and thanks to all the volunteers for our trash-free creek.

Gardening Notes from a NUNA Gardener

Better plant now (peppers, radishes, summer squashes, tomato transplants, cucumbers, okra, eggplant, melons,

Your Neighborhood Store

***Local & Organic Produce *Natural Foods**

***Deli *Hot Bar & Salad Bar *Baked Treats**

***Natural Meats *Vegan Food *Bulk**

Everyone Welcome!

***Friendly Service!**



southern peas, and sweet potato slips) because in May, it will be too late. Too hot.

Recycling Pickup Schedule for every other Friday

April 8, April 22, May 6, May 20, June 3, June 17, July 1, July 15, July 29, August 12 and August 26.

NUNA Website

The NUNA website (<http://nunaustin.org>) is up and running. It is easy to use. We still do not have very many users signed up. The Discussion Forum is the place to send messages and it is the only area of the website which is password protected. Please sign up so that we can communicate with each other. To register, select a user name and password. Sign in and you will see six different types of messages you might be interested in receiving such as News and Announcements, Crime Watch or Classifieds. Choose the ones you would like to receive one at a time and select notify on the right hand side of the screen. If you have any problems, please email Rob Moshein (rob@austinwineguy.com) and he will help you. We still do not have a volunteer in charge of the website. If you have any interest, please contact Judy Willcott at nunanews@gmail.com.

NUNA General Membership Meeting Minutes

February 10, 2011

First English Lutheran Church

NUNA President Laurence Miller called the meeting to order at 5:30 p.m.

Two guests, Chris Ledesma and Jason Fialhoff told the membership about the HONK TX music festival which is scheduled for Saturday, March 12. The celebration of marching band music will be held in selected venues in and around Adams Park.

Rob Mosheim talked about the NUNA website and how to access it. Each user must register with a name and password but by checking the "remember me" icon, signing in each visit will not be necessary.

Lucy Galbraith, who lives on West 33rd Street and is a

2010-2011 NUNA OFFICERS

President Laurence Miller- nunaustin@gmail.com

Vice President Steven Tomlinson- steven@abporter.org

Secretary Cindy Keever- cpkeever@aol.com

Treasurer Jan Moyle- jmoyle@austin.rr.com

NW Quadrant Representative

Rick Iverson- Iver506@sbcglobal.net

SW Quadrant Representative

Kimberly & Dan Renner- krenner@austin.rr.com

NE Quadrant Representative

Mike Riley- micriley@microsoft.com

SE Quadrant Representative

Dick Holland/Cynthia Bryant

rh02@txstate.edu

Austin Neighborhoods Council Representative

Bill Bednar- wbednar@bednarlaw.com

Development Review Committee (DRC)

Steven Tomlinson- steve@abporter.org

Internet Server Host

Pallasart Web Design

Parking Permits

Chris Dial- chrisdial202@gmail.com

Newsletter Design: The MOD Studio- www.themodstudio.com

Newsletter Distribution:

Daphny Ainsley, Bill Bednar, Jack Brannon, Joan Burnham, Pat Campbell and Don Carnes, Jim Creswell, Vicki Ford, Maryrose Galluzo, Alegria Hibbits, Rick Iverson and Joe Sosa, Carole LeClair, Susan Morgan, Jan Moyle, Homer Parsegian, Michael Riley, Naomi Trejo

Do you have a St. David's doctor?

Does your baby?

Backed by the largest neonatal intensive care service in the region, more moms choose St. David's hospitals than any other health system in Central Texas. Join the thousands of mothers and babies that make us the preferred place to have a baby in Travis and Williamson counties. Make sure you and your baby have a St. David's doctor.

If you need help choosing a physician, our free physician referral service can help you find an obstetrician and pediatrician to meet your family's needs.

Maternity and Newborn Care

StDavid's | **HEALTHCARE**

STDAVIDS.COM

Visit our website at stdaids.com or call 512.478.DOCS (3627)

ST. DAVID'S HEALTHCARE INCLUDES:

ST. DAVID'S MEDICAL CENTER | ST. DAVID'S WOMEN'S CENTER OF TEXAS AT ST. DAVID'S NORTH AUSTIN MEDICAL CENTER
ST. DAVID'S ROUND ROCK MEDICAL CENTER | ST. DAVID'S GEORGETOWN HOSPITAL, A ST. DAVID'S MEDICAL CENTER FACILITY
ST. DAVID'S SOUTH AUSTIN MEDICAL CENTER | HEART HOSPITAL OF AUSTIN, A CAMPUS OF ST. DAVID'S MEDICAL CENTER



Manager of Transit Oriented Development at Capital Metro, spoke to the group about Capital Metro and its expanding services. She said all riders can use the UT shuttles as well as regular city buses. She also mentioned the convenience of using the Airport shuttle which only stops 3 times between the pickup location on Dean Keeton and the airport terminal. She also pointed out that citizen input on the rail system projected for the downtown area will begin in April.

Reports:

Bill Bednar reported on the lack of attention given to the neighborhood development plans in the overall city planning process. He urged participation of individual neighbors to help remedy the situation. A motion was passed to authorize Bednar to vote for an ANC proposal on historic districts.

Robert Morris reported that CANPAC has been approached by the UT student government with a view to placing a student on the CANPAC board. He outlined the pros and cons of such a placement and asked for the membership to consider the issue for later discussion.

Mary Ingle reported for Steven Tomlinson that the Development Review Committee is recommending two motions for consideration.

- 1.) Two family residential use is permitted on any lot with 7,000 square feet or more that is at least 48 feet wide; and
- 2.) Two family residential use is permitted on lots smaller than 7,000 square feet if the site plan can meet a F.A.R. requirement of 0.4 as well as impervious cover and other requirements of the Land Development Code and the NUNA NCCD.

The motions were seconded by Bill Bednar and passed by the membership.

The meeting was then adjourned.

Respectfully submitted, Cindy Keever

JOIN NUNA NOW

Fill in your information below and mail it to
Jan Moyle, 200 W 32nd St, Austin Texas, 78705.

Dues are a bargain at \$10.00 per person. Make
your check payable to NUNA.

Name:

Address:

Telephone Number:

E-mail Address:

Grooms Addition Historical Survey Goes Digital: Buddington & Aldridge Place to Follow!

by Jenni Minner

On February 25th, members of the University of Texas project team met with a small group of volunteers in Grooms Addition over coffee, pastries, and laptops to test the beta Austin Historical Survey Web Tool. The meeting is the first time the Web Tool has been tested outside of the University. Four volunteers entered information from previously handwritten historical surveys for Grooms Addition properties. Volunteers learned how to enter and revise information for mapped historic resources. As the group learned and tested the Web Tool, they shared stories about how the neighborhood had changed over the years. It was an important step in preparing the beta tool for testing in the rest of the neighborhood.

If you haven't heard about it already, the Austin Historical Survey Web Tool is a web-based application presently under development to support volunteers in surveying historic resources. It is being developed by a project team from the UT Schools of Architecture and Information to make information about historical buildings and landscapes available to the public and to support community-based updates to the City of Austin's inventory of historic resources. It will improve planning and preservation efforts, by making information about community assets – the gems of history and design – available during planning efforts.

Brand Identity & Strategy

Collateral Development

Digital Marketing

Direct Mail Campaigns

Annual Reports

Event & Trade Show Marketing

Social Media Marketing

Website Design

Marketing Automation

Lead Generation

think
creative.
think
MOD.

learn more @
theMODstudio.com

The next step for the Austin Historical Survey Project is to make information from previous surveys – building condition surveys, an historical survey conducted in 2004 for a proposed light rail alignment, and a comprehensive survey conducted in 1984 available for the entire North University neighborhood through the Web Tool. The project team is in the process of uploading previous data in the form of PDFs. After this process is complete, volunteers in Buddington and Aldridge Place will be invited to try out the Web Tool for surveys in their neck of the woods.

After the project team works with these volunteers and makes improvements based on their experiences, the Web Tool will be launched for the entire neighborhood. This will make the results of surveys available to all of NUNA. You will be able to add or correct information for the historic resources you know and appreciate in the neighborhood.

For updates on progress in developing and testing the web tool in the North University, visit our project website: www.soa.utexas.edu/hp/austin_survey. We've added a page specifically for NUNA.

Like Being in Someone's Kitchen

by Kathryn Kotrla

Kitchens: a place we gather, laugh, and are nourished in emotional and physical ways. NUNA: a community with neighbors who know and care about each other, a protective bubble over our calm, safe world.

How to translate such a way of being to one's life work? A question about which Murph Willcott, brother to Ben and son of Newsletter editor Judy Willcott, has ideas. Murph and I visited at Texas French Bread (TFB), the bakery/restaurant that he runs with his brother Ben, one evening while TFB was getting ready for dinner.

We know TFB for its baked goodies, breakfasts, lunch soups and sandwiches, afternoon tea. At dusk it transforms. It is a candlelit bistro. Window curtains soften the wall. Self-serve tea canisters turn to wine glasses. Counter lights are unplugged. You notice the grand piano in the corner. Great music (Abbey Road) plays softly.

Murph shares the family and business history. How Judy started



TEXAS FRENCH BREAD
2900 RIO GRANDE, AUSTIN, TX

SERVING BISTRO DINNERS
TUES - SAT, 6 - 10 PM

**Bring this coupon
for 10% off your
dinner purchase**

We use local, sustainable, responsibly raised foods in the preparation of our dinners. Every meal we serve is made from scratch with no shortcuts.
BYO beer and wine, corkage \$5.

www.texasfrenchbread.com

baking artisan loaves as an act of love. She touched her bread, studying and improving her craft daily. This founded TFB, the family business. How Murph and Ben share a vision to create food that they “are really excited about” that comforts you “like a French grandmother’s” cooking and to bring a Londonesque “gastro pub” to Central Austin.

The menu reflects the philosophy. It is TFB’s “mission” to use fresh, locally grown products. Small Plates include soups, salads, great (authorial opinion) frites and aioli, and hand-made casoncelli stuffed with seasonal fillings and perfectly sauced. Large Plates include lamb chops, pappardelle, quail, fish, and coq au vin. The menu changes with the freshest ingredients available. Diners bring their own wine or beer.

The experience is leisurely. Murph knows his customers, and welcomes them by name. He and Ben crafted TFB to be a dinner destination “two or three times a week” for friends to gather, to create “a sense of community”. Where “you see people you know”, and diners can talk among themselves and between tables.

Tuesday evenings, Austinites who eat, drink, dance-the-tango or watch tango dancers, gather. Wednesday brings “Family Happy Hour” for families to enjoy French comfort food and let the kids play. Dinner service for all runs Tuesday-Saturday. The weekly dinner menu is posted at www.texasfrenchbread.com, along with a sign up to receive TFB updates. TFB: a restaurant built on family, sustained by love, focused on comfort.

Valerie Mansbendel Home Available



Last year’s Hyde Park Homes Tour featured the home of Swiss Woodcarver Peter Mansbendel, on the corner of Avenue F and 39th Street. That same craftsmanship is evident in this house, built in 1934 for Valerie Mansbendel and her husband William T. Williams, Jr., as a wedding present from her father Peter Mansbendel and his wife Clotilde Shipe Mansbendel, who lived next door, and the bride’s grandparents, Adele and Monroe Shipe, who lived a block away at Avenue G and 39th Street. Shipe had developed Hyde Park in 1891 as the first planned development in Austin and he named this particular area "Shadow Lawn," as marked by still-present concrete benches.

The interior of the home is enhanced by Peter Mansbendel's design and carvings. Perhaps the most unique feature of the home is the carved stone portraits of Valerie and Bill built into the facade of the home.

“This home holds within it a history of much fun and many happy memories, and the special feeling of knowing it was unique. Family next door and friends who came for short visits, and others for long ones, made it a very special place to grow up,” Said Mansbendel granddaughter Valerie Williams Brown.

The house is for sale for the first time outside the family. It has three bedrooms, two baths, formal living and dining rooms and a family room. For information, contact

Lin Team
Old Austin REALTOR®

*Helping people save old Austin,
one house at a time....*

512-472-1930 lteam@austin.rr.com

WWW.THEKINNEYCOMPANY.COM

**AUSTIN
CANINE
CENTRAL**



- Grooming
- Shopping
- Training
- Dog daycare
- Food & treats
- Fun

Now at our exciting, new location

5402 Middle Fiskville Road
Off Airport Blvd., behind Lammes Candies

512.458.8800

austincaninecentral.com



The Eckhardt-Potts House

by Carol Journey

SXSW just celebrated its 25th anniversary and what better time than now to focus on one of our own Historic Landmark houses that served as an impromptu rooming house for out of town musicians participating in Austin's annual music, film and interactive conference scene while the house was home in the early 1990s to Flynn Mauthe.

Flynn, an accomplished guitarist and accordion player himself, played with such bands as the Hickoids, Marching Plague and Butterscotch Tuna. While he was our neighbor it was not unusual to receive an invite from Flynn from over our back fence for an impromptu gathering at his house with the Butthole Surfers. Director Richard Linklater was also a frequent guest at Flynn's house as were the cast and crew of *Slacker*. In 1994, our neighbor's life took a new direction, when after seeing his first Survival Research Labs show, he decided to sell his home and head to San Francisco.

Michelle Prejean, an AISD teacher, became our new neighbor and the house continued its role as a rooming establishment. UT students now rented out rooms. Flynn, now working

with Burning Man and large scale pyro/performance/robotic events in Los Angeles, would occasionally return to his old home as a guest and catch all of us up on his latest pyrotechnic endeavors.

In 2001, Michelle sold her home to David and Heidi Cook. Dave, a consulting petroleum engineer, and Heidi, an attorney turned stay at home mom, and their children returned the house to a single-family residence. Heidi's diligent research was instrumental in establishing the house with Landmark status.

This two-story Craftsman style home, located at 209 East 34th Street, was originally built in 1925 for George and Mary Ann Lane Eckhardt and their two sons. George Eckhardt was the only German speaking dentist in Austin at the time the house was built. Mary Ann Eckhardt, active in the Texas Women's Christian Temperance Union, attended Baylor Female College before her marriage. She roomed with Miriam Amada Wallace and would remain a close friend to the future 29th governor of Texas, Miriam "Ma" Ferguson.

Family history states that Dr. Eckhardt worked closely with the architect James W. Chapman in designing the house to ensure that windows would appear on every wall in order to catch any available breeze. Today those same windows left

open would draw in the sounds of SXSW wafting through the neighborhood.

In 1932, the house was sold to Jeff Davis “J.D.” and Laura May Potts. Reverend Potts, minister at various rural Cumberland Churches in Central Texas, settled in Austin in the early 1900s, with his wife and three daughters. Reverend Potts, Stated Clerk of the Austin Presbytery for 35 years, was instrumental in holding together the central Texas congregations that he served and perpetuating the Cumberland Presbyterian Church in Texas. “Brother” Potts and his wife lived in the house until their deaths, passing away at home; Mrs. Potts in 1948 and Reverend Potts in 1954.

In 1940, the property was transferred to the Potts’ daughter, Maude Potts. Maude Potts served as her parents’ caretaker but was also involved in several business interests, including buying and selling lots and homes in Aldridge Place and Rosedale.

In 1959, Ray Pine purchased the property and resided there with Bert Burns. Ray Pine was a math teacher who taught at Baker Junior High and Crockett High School. Bert Burns was a supervisor for the Board of Education in the 1960s and later taught at the Bickler School. He resided in the house until his death in 1986. In the late 1980s, Ray Pine formed the Pine Foundation, a nonprofit that supports research for finding cures for catastrophic illnesses such as Alzheimer’s and AIDS. In 2002, The Pine Foundation contributed a \$1 million donation to the Austin Chapter of the Alzheimer’s Association. Ray Pine sold his home to Flynn Mauthe in 1991.

Today the house belongs to Michael and Ginny Riley, who reside there with their two sons, Charlie and Chris. Ginny, a native Austinite, was among the early participants when SXSW began simply as a regional music festival “on Sixth Street”. Michael and Ginny have updated their home with a spectacular kitchen while also restoring the original breakfast nook area. Paint was stripped from the woodwork and stairs and the high ceilings were restored. A new screened in porch at the back catches a nice breeze for informal gatherings. Dr. Eckhardt would most certainly be pleased.

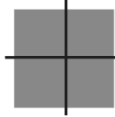
Neighborhood Crime Report

For February 24, 2011 to March 24, 2011

The Austin Police Department lists crimes by neighborhood on their Crime Search Website (www.ci.austin.tx.us/police/crimeinformation).

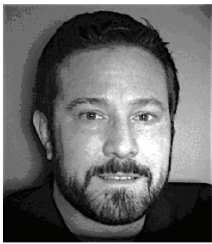
Abandoned Vehicle	2
Accidental Death	1
Assault with Injury	2
Assist EMS	1
Auto Theft	3
Burglary of a Residence	1
Burglary of a Vehicle	4
Check Welfare	1
Credit card Abuse by Forgery	1
Criminal Mischief	2
Criminal Trespass	1
Debit card Abuse	2
Dog Fighting	1
DWI	1
Family Disturbance	1
Fraud/ Other	1
Graffiti	1
Harassment	3
Indecent Exposure	1
Leaving the Scene Crash/Accident	2
Lost Property	1
Poss Marijuana	1
Public Intoxication	1
Suspicious Person	2
Theft	5
Theft by Shoplifting	2
Theft of Bicycle	3
Warr Arrest Non Traffic	2

common sense HOME STAGING



Because Selling Faster and for More Money Makes Sense!

- Home Staging Consultations
- Occupied & Vacant Staging
- Room Makeovers / Redesigns
- Move-in Decorating
- Home Organizing
- Color Consultations
- Curb Appeal
- Project Management



Steve Ascheman, Owner
Certified Staging Professional™

**Over 15 years of
experience preparing
houses for the market**

**Call now to put Steve's
expertise to work for you!**

512.470.2767

www.CShomestaging.net

Inspired Design, Built to Last

CG&S Design-Build improves our clients' lives through improving their homes.



Residential Architecture, Construction,
and Outdoor Spaces

www.CGDSB.com

444.1580

**Just Listed
for sale in
historic
Aldridge Place**

104 W. 32nd St.



Authentic 1917 Arts & Crafts bungalow located just one block from Hemphill Park. Beautifully restored with long leaf pine floors, box-beam ceilings, Craftsman posts and built-in bookcases. 3BR, 2.5BA, 3LIV, 2DIN. Screened-in porch, swimming pool, gardens. Basement with workshop. Visit www.104West32nd.com for virtual tour.

List price \$995,000

Your North University and Aldridge Place Specialist

Suzanne Pringle

REALTOR, Broker

Cell (512) 217-1047

pringle@ameliabullock.com

www.ameliabullock.com



Please contact me for a complimentary market analysis and customized marketing plan for your home or investment property and a list of properties for sale.



LUXURY
PORTFOLIO
INTERNATIONAL