



NORTH UNIVERSITY
NEIGHBORHOOD ASSOCIATION



**Letter from the
Vice President, Steven Tomlinson**

I walk through NUNA almost everyday, and I'm always thankful. Sure, it's a beautiful place with history and diversity. What's really gratifying, though, is how much people care about this neighborhood. You can tell just walking through it.

Right now you'll notice mulch spread around the base of our drought-stressed pecans. Thank Bill Bednar and Julia Willis and Brandon Tucker and all the neighbors who pitched in to make "It's My Park Day" happen for NUNA this past month. For people like me who tend to despair about environmental degradation, the people who organize "It's My Park" are angels. They bring us together, get us tools (and tacos! — thanks, Trudy's) and remind us how many people care and how powerful we are together. Even in the years when I can't join the team in person, I'm always with NUNA in spirit for this celebration of our community.

Austin Energy is working with NUNA on a plan to maintain the lights on Aldridge Place's historic columns. We're after a solution that preserves character and still meets the legal and technical requirements of the City. It's more complicated than you'd think, but we're on it. Bill Bednar, Stephen Wilkinson, Laurence Miller and David Biven and I have been exploring options with Austin Energy's Allen Small, and the conversations have been fun and encouraging. NUNA neighbors bring a lot of creativity and passion to problem-solving. More soon as a plan takes shape.

Even when we get discouraging news, as we did a few weeks ago when the Historic Landmark Commission gave us "certificate of appropriateness" to a plan to develop three new duplex units on the historic Steck House site on West

34th Street, my deeper feelings are respect for people like Mary Ingle, Bob Kaler, Carol Journeay, Rick Iverson and Terry McGinty and Leon Barish, who have showed up over and over to represent NUNA's interests and NCCD ordinance with City officials. Because of their efforts, the site plan is already less damaging to the character of the

NUNA Trivia

What Latin inscription is hidden between the building of Brazilia Waxing Spa on Guadalupe and the Iverson Compound of 34th St?

Email answers to: nunanews@gmail.com

(hint: read Dick Holland's awesome article in this issue to find out)



*Photo of the Month: Spring Swing, Baby—
Two of the Youngest NUNA Residents at Play*

NUNA GENERAL MEMBERSHIP MEETING

First English Lutheran Church

Monday, April 6, 2015

6:30 pm

AGENDA

- I. **Call to Order** Approve Minutes
- II. **New Business—**
 - a. **Vote.** Slate of NUNA officers (JR Johnson)
 - b. **Discuss.** Updated “Welcome to the neighborhood” letter (Steven Tomlinson)
 - c. **Discuss.** Potential change to residential permit parking on Moore Blvd (Dick Holland)
- III. **Old Business—**
 - a. **Discuss.** Steck house project (Mary Ingle)
 - b. **Vote.** To help fund Board of Adjustment request for code interpretation (Mary Ingle)
 - c. **Discuss.** Hemphill park tree and irrigation updates (Bill Bednar)
 - d. **Discuss.** Progress on Aldridge light columns (Steven Tomlinson)
 - e. **Discuss.** Sparky Park construction status and updates (Doug Plummer)
- IV. **Reports**
 - a. Treasurer – Jan Moyle
 - b. Quadrant Leaders’ – Dick Holland, Mary Ingle, JR Johnson, Rick Iverson, and Laurie Marchant
- V. **Adjourn**

This agenda, and any updates, posted here:

<http://1drv.ms/1yeCezV>

street than it would otherwise have been. This battle isn’t over! But no matter how it ends, what I’ll remember is generous and committed neighbors.

A few years ago I tried to go 21 days without complaining. I wore a wristband to remind me and moved it from one wrist to the other anytime I complained accidentally. It turned out to be a much tougher challenge than I’d imagined, but I discovered something: I was less likely to complain (and much less likely to despair) when I could come up with something, anything, to do to *engage* a problem rather than ignore it. I can’t stop global warming, but I can pick up trash and help spread mulch to save trees and walk to the store. I can sit thoughtfully with neighbors and officials and listen for inspiration. Somehow these little engagements dispel complacent despair and build momentum. When we do these small things together, we condition reflexes and strengthen muscles and make meaning. We connect.

If you haven’t found a place to plug in to NUNA yet, come to the General Membership Meeting and join the conversation. Start small and see how good it feels to be one of the people you’re thankful for.

In this issue—A Note from the Editor

Dear Neighbors,

It’s astonishing how much history one house can hold. But it’s no ordinary house that **Dick Holland** is writing about in this spring NUNA newsletter, it is the **Iverson Compound**, a dwelling that has so many stories lingering among its lush cypress and palm garden that it gives you pause and pricks the imagine. For example, when the former UT President, H.Y. Benedict lived there in the twenties and thirties, what were the conversations he must have had with his friend, Roy Bedichek, about planting cypresses in the garden, trees that still tower above 34th Street today? (a sculpture of Texas naturalist Bedichek, in case you didn’t know, can be found at Barton Springs, forever conversing on Philosopher’s Rock). Did couples ever fall in the water when boating on the pond at the Buddington’s parties? And who might have Delia Edwards driven around in her yellow Packard? These are the little life details left to our imaginations. But I am indebted to writer Dick Holland for researching the Iverson home’s history and describing the juicy facts and personalities with aplomb so that we can know a little bit more about this special neighborhood where we live. So indebted, in fact, that I will buy him lunch next week.

Also in this issue is a review, graciously given to us by the Texas arts on-line magazine, *Glasstire*, about **Steven Tomlinson's** intriguing exhibition currently on display at the **Fluent~Collaborative** art space on 33rd St. The excellent review by **Risa Puleo** gives insight into Tomlinson's artistic notebooks and the mechanisms of mind and spirit behind them. Check out *Glasstire* for more local art news. www.glasstire.com.

Studies show, neighbors who dig and spread mulch together tend to have more harmonious relations. We had fun getting dirty together at our It's Your Park Day event on March 7th. **Bill Bednar** writes all about it here, with photos by his park cohort **Julie Willis**.

My dear, reliable regular contributor **Mary Ingle** has given us two lively pieces that will help you know your neighborhood better. We know you have all been wondering what a Quadrant leader really does—Mary demystifies it for you here. We also include short bios of our four current dedicated Quadrant leaders: **Laurie Marchant, Dick Holland, Rick Iverson, and Mary Ingle** herself. Mary's other piece informs you about what's going on with the Codenext, the rewrite of the Land Development Code, which she concludes with this great quote from Duncan of the Land Development Advisory Committee, *"let's start treating Austin more as a community, rather than just a commodity."*

Because we are a NUNA community (because whether we know each other's names or not, engage or not, our lives are all influenced and touched by the people who live around us) please take time to enjoy these pages. If you have any suggestions for the newsletter, please email nunanews@gmail.com.

Yours truly,
Clayton Maxwell

NUNA Neighborhood Meeting Unapproved Minutes

2/9/2015
by Eileen Gill

Call to order:

Meeting NOTES from 12/1 to be approved. Steve motioned to approve, Clayton seconded. APPROVED.

2013-2014 NUNA OFFICERS

President Michael Riley - NunaAustin@gmail.com

Vice President Steven Tomlinson - steven@abporter.org

Secretary Eileen Gill - eileenpgill@gmail.com

Treasurer Jan Moyle - moylejan@gmail.com

NW Quadrant Representative

Rick Iverson - Iver506@sbcglobal.net

SW Quadrant Representative

Laurie Marchant -

Laurie@alexandermarchant.com

NE Quadrant Representative

Mary Ingle - casamia22@att.net

JR Johnson - jr.johnson@mac.com

SE Quadrant Representative

Dick Holland - rh02@txstate.edu

Austin Neighborhoods Council Representative - vacant

CANPAC Representatives

Mary Ingle, Bill Bednar

(Laurence Miller as alternate)

Development Review Committee (DRC)

Steven Tomlinson - steven@abporter.org

Parks Committee

Bill Bednar, Julie Willis

Internet Server Host

Pallasart Web Design

Parking Permits

Eugene Sepulveda - Eugene@abporter.org

Newsletter Design

The Mod Studio - www.themodstudio.com

Newsletter Distribution

Trish Tang, Debi Rivier-Harris, Don Carnes and Pat Campbell, Rick Iverson and Joe Sosa, Daphny Ainsley, Paul Kens, Carole LeClair, Vicki Ford, Alegria Hibbits, Homer Parsegian, Michael Riley, Clayton Maxwell (with Jim and Jan Moyle as permanent subs)

Newsletter Ads

Julie Willis - Julie_willis@outlook.com

Newsletter Editorial

Clayton Maxwell - nunanews@gmail.com

- 1) EC March meeting—slate of nominees for new officers.
- 2) HONKTX (March 28th)—hosted for the last 3 years. Sat am gathering in the triangle near Trudy's. Asked for NUNA support. Motion to approve NUNA writing a letter to let Jan motioned, Bill approved.
- 3) Mary Ingle talked about CANPAC—we're late submitting our plan, asking us to submit our priorities. None of our priorities have been done for the last 11 years, so we are going to just resubmit. CANPAC just submitting the same list of priorities that were not addressed in the past years. Steve and Michael talked about the lack of sidewalks on 34th and E. 33rd between Grooms/Duval. Mary suggested calling CapMetro re: sidewalks on connecting bus route streets.
- 4) MUSIC PERMIT FOR SPIDERHOUSE: applying for 70db to 10pm on weeknights, and midnight on Weekends. Conrad wrote a message to Steve and he is asking if we support a continuation of the same terms for permit. No changes in what we are supporting. Some neighbors complain, but many people don't hear anything. We will continue our previous support of same permit.

AUSTIN ENERGY—ALDRIDGE LIGHT COLUMNS.

Austin Energy saying that they no longer want to maintain the OLD poles. They said no, they would rather put in new poles. But the n'hood wants to keep the old poles. AE said they would be amenable to switching the metering of the box. And their engineer would propose a solution to us. We are in the process of trying to figure out what the cost would be. Fixtures need to be repaired too. Lots of people are in support of preserving these.

SPARKY PARK—

Mary I. gave update —we are trying to meet with Parks Dept. Still no schedule of when the renovations of the building will take place. Meeting to take place week of 2/16. Construction is still out for bids.

STECK HOUSE:

Mary I 305. E. 34th. Historic House that someone wants to demo and the site plan was denied. No site plan has passed muster. Parking/Drainage not up Cert of Appropriateness Committee at Historic Landmark Commission for 3 duplex to be built on the property. (28 bedrooms) Hearing re: Demo of the outbuildings.

NUNA WEBSITE REDO: in the process of being redone. Brandon and Sarah THANKS!!! Parking info, all newsletters archived on there. Will be much more usable. Concerns

Join the Discussion!

Listserves are a great way to become more connected with your community. **The North University Yahoo Group** is a hands-on, public communications resource, helping neighbors inform, communicate, and build a stronger community. The list is inclusive, open to anyone who lives in the North University Neighborhood and to people who have a material interest here, such as operators of a business, non-profit, or civic process. One can subscribe by sending E-mail to:



nuna-residents-subscribe@yahoogroups.com

or by visiting the Yahoo! Groups site at:

groups.yahoo.com/group/nuna-residents



@crimeatx is a crime watch Twitter feed that promotes crime prevention and public safety awareness in our area. It was established by the Central Austin CDC in January 2012 to help inform and prepare the returning student community in the immediate aftermath of the NYE attacks and murder of Esme Barrera. To sign up or learn more, visit **twitter.com/crimeatx** and tweet with the hashtag **#NORTHUNIVERSITY**.

AUSTIN CANINE CENTRAL



- Grooming
- Shopping
- Training
- Dog daycare
- Food & treats
- Fun

Now at our exciting, new location

5402 Middle Fiskville Road

Off Airport Blvd., behind Lammes Candies

512.458.8800

austincaninecentral.com

JOIN NUNA NOW

Fill in your information below and mail it to Jan Moyle, 200 W. 32nd St, Austin, Texas, 78705. Dues are a bargain at \$15 per person, \$25 per couple and \$10 per student. Make your check payable to NUNA.

Name:

Address:

Telephone Number:

E-mail Address:

about the new website send to Michael Riley or Clayton. Information is current!

WELCOME TO NUNA letter. —Time to update and resend that out. We have lots of new neighbors. (to be added to the website)

Bill Bednar update on Hemphill park: Slow winding of the way to water the trees in the park during the drought. There is a gray water reclamation supply point at the University but there is no interest in running a line to our park. Julia Willis is contacting landscape architects to find out if anyone is interested in pro bono. Some people think there is an old irrigation system in the park—but no one knows where it is. Bill has looked for heads. PARD doesn't acknowledge that they ever knew where the irrigation system is. Janet contacted ACC to see if they want to be involved. The reclaimed water at UT is on Waller Creek.

Julie is contacting people on her list.

Mary I. Should we go to PARD (citizens communication) and submit a citizens request for water? And they could put it on an agenda. And we just ask.

IT'S MY PARK DAY... March 7th—SAT AM Troop 16 of Boy Scouts delivering 180 sacks of dillo dirt. We need someone to Trudy's Janet. Tacos for 60 plus. Brandon said he would pick up tacos and coffee/oj from Trudy's. And we're also getting City mulch. We are looking for someone to help with ITS MY PARK DAY for next year.

3) paying for the dillo dirt. This is a fundraising event for the Boy Scouts. Can NUNA pay for this? Austin Parks Fund to give a grant for 500.00

Agenda item for March 2nd. The rest of the money that is due (approx 500.00) for Bill.

Jan gives budget update: see budget attached.

Mary I. Quadrant leader — the gas company has been working on 35th St. There is a gas smell. Btw. Duval and Tom Green on 35th.

Another gas event on 32nd/Tom Green.

Moore Blvd. Between grooms — narrow street with parking problems. Possible RPP changes?

Dick H. asked for that to be on the March agenda. Move to adjourn.

Presidents, Cypress Trees, and Yellow Packards: The Rich History of the Iverson Compound

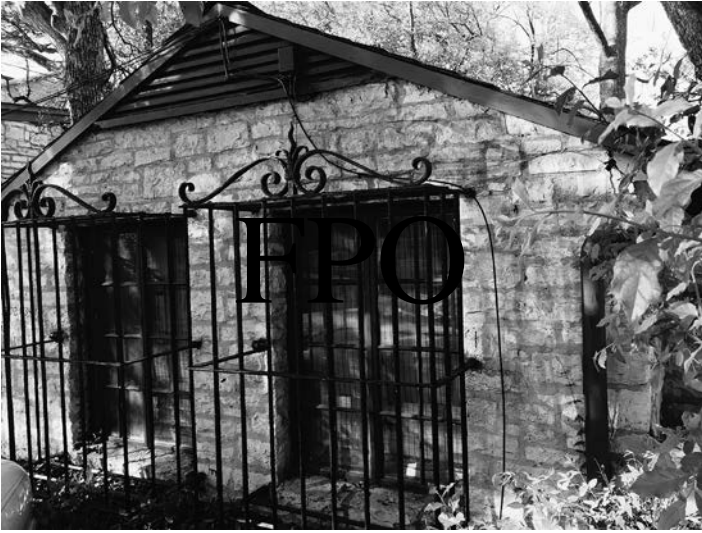
By Dick Holland

Since 1978 Rick and Nancy Iverson have lived in what many in NUNA think to be the most interesting property in the neighborhood. This is the Buddington/Benedict/Edwards/Sheffield compound between Fruth and Guadalupe at 34th Street. Many passers-by are intrigued by what lies behind the beautiful stone walls surrounded by large cypress trees. Walking up 34th a few years ago you could also hear a loudly crowing Polish rooster who belonged to the property. His name was Dr. Scrambles.

Rick Iverson has had much to do with the preservation of our neighborhood. He was president of NUNA three times in the 1980s, and when the Central Market development was being constructed Rick helped negotiate the construction of the pond.

Meeting with the Iversons in the compound becomes a lesson in what has happened in this part of Austin since the Civil War commenced. Nancy is the historian, and explains that Albert G. Buddington built the original two story structure as a home for his family in 1860. Buddington bought this corner of a land grant that belonged to Martin Moore. When one of Moore's daughters objected to the sale, she was placated with "a gray mare and \$225.00." Originally the front façade of the Buddington house faced a circular drive that opened onto the "Waco highway," now Guadalupe Street. As their family grew the Buddingtons added a wide upstairs gallery in the back and dammed up the tributary of Waller Creek in back. A Buddington daughter spoke of dances at night on the gallery, and of couples boating in the pond.

The next notable owner was University of Texas president H.Y. Benedict, an avid gardener. Benedict was a beloved figure on campus – one of his academic touches was an inscription on the landing of the west entrance that read: "Parva sed apta mihi," (small but suiting me). Consulting with his friend the Texas naturalist Roy Bedichek, Benedict planted what now are towering cypress trees. Benedict lived in the house sixteen years until his sudden death in 1937.



A stone cottage in the compound

For the next forty years the property was owned by two remarkable women, Delia Edwards and Wilhelmine Sheffield. Mrs. Edwards' great contribution was hiring the architect Arthur Fehr who significantly added on to the main house and built a beautiful stone cottage on the south side, using the same local limestone used in the original house. Fehr was an adherent of a southwestern version of the arts and crafts movement, wisely employing the Swiss wood carver Peter Mansbendel (who lived in nearby Hyde Park) and his iron worker cohort Fortunat Weigl. The casement windows and poured concrete floors complete a fine 1930s take on the 19th century.

Delia Edwards cut quite a figure driving her yellow Packard, and she sold the compound to another larger-than-life character, Wilhelmine Sheffield. By the time Mrs. Sheffield bought the property in 1946, the Guadalupe Street commercial strip had already been built, covering up the drive and the front of the house, including Benedict's Latin inscription. Mrs. Sheffield completed the enclosure in 1950, with the building of a minimalist stone house at the east end of the compound, and the construction of an awe-inspiring free standing stone wall on the north side that stands over 20 feet tall and 150 feet long. Mrs. Sheffield finished it off in the Mexican fashion with broken glass on top of the wall.

Mrs. Sheffield was a smart businesswoman who rented out eight apartments in the compound—in 1978 she sold the compound to her tenants Rick and Nancy Iverson, and continued living there for eleven more years. The Iversons have taken very good care of the property and have been leaders in preserving the north University neighborhood ever since.

During the rare periods of monsoon in Austin the compound becomes tropically lush. Benedict's cypress trees are majestic, there are large palms that look right at home, and the property may feature Austin's largest magnolia tree. Everything, including the back of the big house, faces inside, so what every occupant (there are now seven tenants) sees is a reflection of their own stone building across the way, and the lush grounds. Urban Austin, just outside, feels far away.

What Does A NUNA Quadrant Leader Do, Anyway?

Mary Ingle

In the same spirit, if not bigger than, Gallia in tres partes divisa est (Julius Caesar, 46 BC), North University Neighborhood (NUNA) is divided into 4 parts/quadrants: NE, NW, SE, SW. The dividing axes for these quadrants are 32nd Street and Speedway. (That is where the popular phrase "East of Speedway" originated!)

When I was asked to write a newsletter story about NUNA Quadrant leaders, I had to ask myself this question- just what exactly do these mysterious people/Quadrant Leaders in our neighborhood do, anyway? What a topic! Let me backup- years ago when I was innocently approached by the Presidents of the neighborhood (thank you, Rick Iverson and Mary Gay Maxwell!) about being the NE Quadrant Leader, not wishing to over-commit, I asked about the Quadrant Leader duties. The title and duties remained vague and nebulous; basically, I was to report to the city any burned-out street lights or ruptured water lines in my quadrant. So, after donning my red baseball cap with flashlight in hand, I jumped on my bicycle to look for those things. It was really exciting, not!

What I did notice were interesting houses, a park, and many charming (some very eccentric!) people. Finally, the position of neighborhood Quadrant Leader was picking up a different cache that was more exciting. I started to have conversations about all sorts of topics with neighbors. The NE quadrant leader "job" was beginning to take shape and definitely was less boring, until one night...

One night, I received a call from a hysterical neighbor who was out of town on vacation. She had learned that her vehicles (2 trucks) were not parked in front of her house. In fact, no one knew, including the Austin Police Department, where her trucks had gone. She asked if I would be willing to go look for her trucks, in the dark? Never wanting to turn down a good opportunity (for a good story, of course!), dressed in Quadrant Leader attire of red baseball cap and

flashlight in tow, I stomped around the neighborhood to see if I could find her vehicles. Without much hope, but the willingness to try, I FOUND THEM! (Can you believe it?) I had succeeded in finding something that someone needed; I had made my neighbor extremely relieved and happy.

The long and short of this story is being a neighborhood Quadrant Leader can be a very rewarding and fun experience, if you have the spirit of courage and the creativity to step up as a neighborhood volunteer. A round of applause should be given our talented and creative Quadrant Leaders: Laurie Marchant (SW), Rick Iverson (NW), Dick Holland (SE), and JR Johnson (NE co-quadrant leader) for their efforts to make NUNA a more interesting place to live this past year! Their presence, their efforts, and their stories made and continue to make our neighborhood vibrant and lively.

MEET YOUR QUADRANT LEADERS:

Mary Ingle, Northeast Quadrant, 512-320-8449

I have lived in NUNA for 26 years in a 1928 cottage with my husband, Stephen and “Spooky the Kat.” The cottage, in constant need of repair and upkeep just like any good, older house, has kept me busy over the years. I am the happiest when I have a remodeling job at hand! I have participated with North University Neighborhood in the City of Austin’s Neighborhood Planning Process, which was my introduction to neighborhood processes and city politics. This was a very addictive process, even though I have allowed my brain to become over-cluttered with the most useless, claptrap of zoning terminology and acronyms. What a strange path to follow! In addition to being NE Quadrant Leader, I am now serving as the President of the Austin Neighborhoods Council, a volunteer, umbrella group for all of Austin’s neighborhoods. I am afraid that my experience as a NUNA Quadrant Leader made me fearless about volunteer service.

Laurie Marchant- Southwest Quadrant

I’m Laurie Marchant, your phantom quadrant leader. When my family moved to Aldridge Place back in 1978 it was a very different neighborhood. Since we had moved from the burbs, it felt like we were moving to a different city. My brother had a friend whose mom didn’t want to bring him to our house on W 33rd because we lived in the “inner city”. That really happened! Ask my parents, John and Babs Davis, they still live there! We were some of the original members of Wheatsville. I was fortunate enough to buy a house on Laurel Lane where I have lived since 1998. I have two great



Orthodontics for Adults and Children

Stanton J. Henry DDS MDS
Dustin Roden-Johnson DDS MS
Amber C. Burgess DMD MS

1500 W. 38th Street Ste. 27
Austin, Texas 78731

512-716-0307

10510 W. Parmer Lane Ste. 112
Austin, Texas 78717



Website Reboot

Guess what? We are finally updating the website! With web-savvy neighbors Brandon Tucker and Sarah Seidel kindly taking the reins from former web designers Rob Moshein and Bob Atchison, we are giving the NUNA website a little freshening up. You can now read the newsletters on line, see the latest news, or just find out when the next meeting is. Thanks, everyone. www.nunaaustin.org



Austin's Original Deep Pan

TEXAS \$3 OFF ANY LARGE (must present this coupon)

Exclusive offer for our NORTH UNIVERSITY NEIGHBORS

603 W 29th

(512) 478-5712



DEEP PAN - THIN CRUST - SALADS - WINGS - LOCAL - BEER - VEGAN

kids Ava (9) and Augie (6). I own a decorative hardware and plumbing showroom here in Austin and am opening a satellite showroom in San Antonio this year.

Dick Holland- Southeast Quadrant:

I was History Bibliographer at UT General Libraries for 17 years. Then I was the founding curator of what is now called the Wittliff Collections at Texas State. This involved putting together the Lonesome Dove archive etc etc. This was a very exciting job. After retiring from there, I edited the Letters of Larry L. King (TCU Press) and The Texas Book for UT Press (2006). I also taught one class a year at UT in Liberal Arts Honors for 13 years. I've written many pieces for the Austin Chronicle, The Texas Observer, and Tribeza. I am married to Cynthia Bryant, who recently retired from teaching at the UT School of Law. We have 2 children who attended Robert E. Lee and three grandchildren, two in Austin and one in New York.

Rick Iverson- Northwest Quadrant

(Please see Dick Holland's excellent write up of Rick's historic home in this newsletter!) I've been working on the Historic District with some very experienced neighbors. The best part has been trips to the Austin History Center. They have heart thumping stuff on Aldridge and we are attempting to make perfect sense concerning our future. The NPT has been meeting since 2004 and I'm a member along with several others. Prior to the NCCD I worked on most, but not all of the neighborhood issues. This has a great way to get to know my neighbors.

You can leave out the divorced floozy part and change whatever you want.

My Park Day Another Huge Success!

by Bill Bednar

Many thanks and congratulations on a job well done to this year's group of volunteers! Our dual mission was again to clean up trash and fertilize and mulch the Hemphill trees. This year we were aided in purchasing the dillo dirt by a \$500 mini-grant from Austin Parks Foundation and another \$400 from our very own NUNA to make up the balance. Thank you, thank you!

Leading the charge at 8:00 AM was advance guard **Janet Beinke** and **Brandon Tucker**, setting up food and tools, followed by Austin Boy Scout Troop 610 (NUNA and Hyde Park), who showed up with pickups and scads of scouts and dads and delivered 180 bags of dillo dirt straight to the trees!. Then came our other great NUNA volunteers, which this year included a sizeable contingent from the UT student community, and who quickly divided up into trashers, dillo dirt spreaders, and mulchers. The trash team, under the intrepid leadership of **Barbara Davis**, made quick work of both parks, and then joined the spreaders and mulchers, seeing to it that each major tree got a nice dose of dillo dirt. Mulching turned out to be less of a hump this year, because we were able to prevail on Austin Urban Forestry to place the mulch dumps more strategically. Many thanks to **Manuel Flores** for his help with that! Our mulch gorillas fell to with willing backs and mighty hearts, and lo, the mulch was spread! The trees are very grateful.

Special thanks go to sign and publicity honcho Julie Willis, food mavens **Janet Beinke** and **Abby Tucker**, tool honcho **Brandon Tucker**, NUNA pundit Clayton Maxwell, and everybody who showed up, whether you made the sign-in or not!

Many thanks as well to our good neighbor **Trudy's Star**, who as in past years donated mid-morning breakfast tacos and orange juice. Thanks also to Starbucks for the coffee! And to Keep Austin Beautiful, who provided those plastic trash pickers and bags. And last but not least, thanks to the Austin Parks Foundation for the mulch, tools, T-Shirts, munchies from **Wheatsville**, freebie gift cards, and that great \$500 mini-grant that helped pay for the dillo dirt. HEMPHILL-ADAMS PARK THANKS YOU ALL!!!



Park Day



ARBOR CAR WASH & LUBE CENTER

ARBORCARWASH.COM
3120 GUADALUPE ST.
(512) 451-2696

10401 JOLLYVILLE RD.
(512) 346-8050

\$10 off OIL CHANGE

Includes FREE full service car wash



Most cars. Synthetic or bottles oil and specialty filters extra.
With coupon. Not valid with any other offer.

FREE

FULL SERVICE CAR WASH

With purchase of state inspection



With coupon. Not valid with any other offer.

\$10 off OIL CHANGE

Includes FREE full service car wash



Most cars. Synthetic or bottles oil and specialty filters extra.
With coupon. Not valid with any other offer.

\$5 off

ANY FULL SERVICE CAR WASH



With coupon. Not valid with any other offer.



Award Winning
Architecture, Construction,
and Outdoor Spaces

www.cgsdb.com
512.444.1580



Sparky Park Update

by Douglas Plummer

Construction drawings have been completed for the Sparky Park Building Rehabilitation and PARD is working with a general contractor to finalize the proposal and schedule for the Sparky Park Building Rehabilitation. The Sparky Park Committee is hopeful that there will be sufficient funds to realize the community's vision. PARD and the architecture firm, hatch + ulland owen architects, are reviewing cost proposals and the community will be apprised of progress on the rehabilitation project.

The Sparky Park Committee is also working with PARD on developing usage guidelines for the park. PARD recognizes that the site constraints such as proximity to residences and lack of parking will require a thoughtful approach to how the park is used. For updated information about the building rehabilitation, please visit the following link:

www.austintexas.gov/department/sparky-park-building-rehabilitation or contact Kim McKnight at (512) 974-9478 or kim.mcknight@austintexas.gov.

What is Next in CodeNEXT - The Zucker Report

By Mary Ingle

After Austin's Comprehensive Plan (Imagine Austin) passed in 2012, the City has focused and continues to focus its efforts on rewriting the Land Development Code, "CodeNEXT." All we have heard for years is that the code is too complex and cumbersome to serve our community. Many of us know that there is another component in this complex-code issue; it involves the administrating department, PDRD- Austin's Planning and Development Review Department- which is in shambles. For many of us neighborhood folks, the problem is not actually the code, but the problem rests with the Planning and Development Review Department's loose interpretations of code by favoring development requests over what been decided in the existing Neighborhood Plans, and by paying little attention to protect the quality and character of our neighborhoods, hence creating the need for more protections with overlay ordinances. This City department affects directly and indirectly the quality of life in Austin's neighborhoods.

The management assessment of PDRD in the Zucker Report proved the disheveled state of affairs within the administrative offices; it was done in conjunction with CodeNEXT consultants. (Getting that report released was no small feat. ANC played an active role along with the press in getting the report released out to the public.) The final draft may be reviewed here: www.austintexas.gov/department/zucker-draft-final-report

The Zucker Report was everything we thought it would be. The Austin American Statesman ran a series of stories linked to this report. Many of us tried to file public information requests to the City for the draft of the report, which should have been released in December 2014, to no avail. Even the Press was having difficulties with responses to their public information requests. The final report was released on Wednesday, March 18. The City staff was working to keep the Zucker assessment under "wraps" until some internal changes and decisions could be agreed upon.



Park Day

We can only hope for the best, because CodeNEXT is promising a new hybrid code for our future. Keeping in mind that we could have the best code product in the country, but if the administrating department is inadequate, it would mean nothing and will do nothing for Austin. To quote Jim Duncan, the former head of the Planning Department in the 1980s and now a current member of the Land Development Advisory Committee, *“let’s start treating Austin more as a community, rather than just a commodity.”* This statement sums up the spirit of what is wrong with our code process and what could be improved.

**A Review: Steven Tomlinson—
Notebooks at Fluent~Collaborative**

**Published on February 7th, 2015, in *Glasstire*,
the online magazine of Texas Visual Arts
Thank you Glasstire for letting us republish it here.
www.glasstire.com | Written by Risa Puleo**

In a very inspired and inspiring choice, the Just Because branch of Fluent~Collaborative presents the notes, sketches, and mind maps of UT economics professor, playwright and pastor Steven Tomlinson. Fluent director Laurence Miller found Tomlinson’s particular method of working while scrolling Facebook and extended an invitation; the resulting show is a perfect match to Fluent’s testsite program with its strong focus on critical writing and Miller’s interest as a collector of conceptual artists’ books and text-based art.

When Tomlinson walked me through the exhibition last week, he mentioned he carries a notebook with him at all times to capture the “cognitive dandruff” and “exfoliations” of his mind, a humble and lyrical way of describing the permutations of an active and prolific thinker. I refrain from writing “restless” because that description implies agitation. Rather, Tomlinson wrestles, grapples, turns over an idea in his head, perusing it with curiosity and a will to understand, so that when the idea is translated to paper via the hand, it is articulated with the most impressive clarity of thought and density of form.

In his show at Fluent~Collaborative in Austin, notebook pages of all sizes are inscribed from edge to edge with crisp, block-printed letters. Some words are bold, or written

PAW PAUSE

Full Service Pet Staycations



Dolly Ensey
Certified Treat Dispenser

Tail Wag Ratings Available

512.553.6729

pawpausepets@gmail.com

YOST AUTO I
5415 N. LAMAR BLVD
512-374-9678

YOST AUTO I
6517 N. LAMAR BLVD
512-452-9678



**YOUR ONE-STOP SHOP FOR ALL REPAIR NEED!
FROM OIL CHANGES AND STATE INSPECTIONS TO
ALIGNMENTS AND DIAGNOSTICS,
WE’VE GOT YOU COVERED!**

SAME QUALITY AS DEALER WITH BETTER RATES!

FREE A/C CHECKS!

CERTIFIED HYBRID REPAIR!

FREE BRAKE CHECKS!

SEASONAL PROMOTIONS AND OFFERS ON FACEBOOK/TWITTER!

WWW.YOSTAUTO.COM



FB.COM/YOSTAUTO

Remember, you're
selling your home,
not your sanity.

THE GILL AGENCY

Because of our **unique marketing**, we routinely sell our listings **faster** and for more money than other brokerages in town.

Since we live in the neighborhood, we **understand** what makes it special and can convey this to buyers.

We have 20+ years of marketing experience & 10+ years as **Multi-Million Dollar Producers**.

We offer **creative**, unparalleled sales strategies for your home.

We love "history" and know buyers do too – let us help **research** and **craft** your home's story!

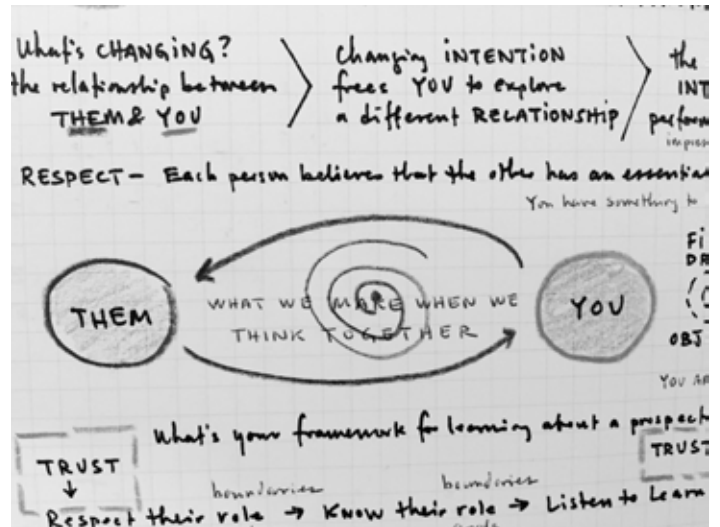
CONTACT US TODAY

512.217.0674 | TheGillAgency.com

Eileen Gill, Broker, ABR, GRI



Find Yourself in Austin™



A Page from Tomlinson's Notebook

in all caps, or highlighted in different colors, outlined with boxes, written larger or combinations of the above. Mark Lombardi's drawings come to mind, for the way Tomlinson details complex macro-scale systems. Also dance notations: in a sense, Tomlinson's engagement with pen and paper is as related to choreography as it is to drawing, for he notates the choreography of his mind as it moves and dances around an idea.

The content of Tomlinson's musings are as compelling as their form. Each page of notes speaks to a question of one of his multiple practices. While economics, theatre and spirituality are superficially divided into separate disciplines, Tomlinson finds the connective tissues in humanness. As an economist and business consultant, Tomlinson's questions revolve around value and how to integrate human values like compassion, kindness, and intimacy into the systems of exchange, matching money to emotion in business. For example, to solve the problem of rescaling authority in corporate structures, Tomlinson's drawing of a hierarchical apex with a leader at the top flips when one reconsiders the image not as a two-dimensional schema but as a perspectival drawing. Top-down power structures are conceptualized as a group of people working with different priorities towards the same goals around a corporate conference table.

As a playwright, questions of performance and presenting oneself are a primary concern. On another page from a different notebook, Tomlinson maps the path from performative posturing as a defense mechanism that leads to antagonist relationships. In another drawing on the same page, he presents generosity, vulnerability and open-heartedness as attributes that pave the path to connectivity.

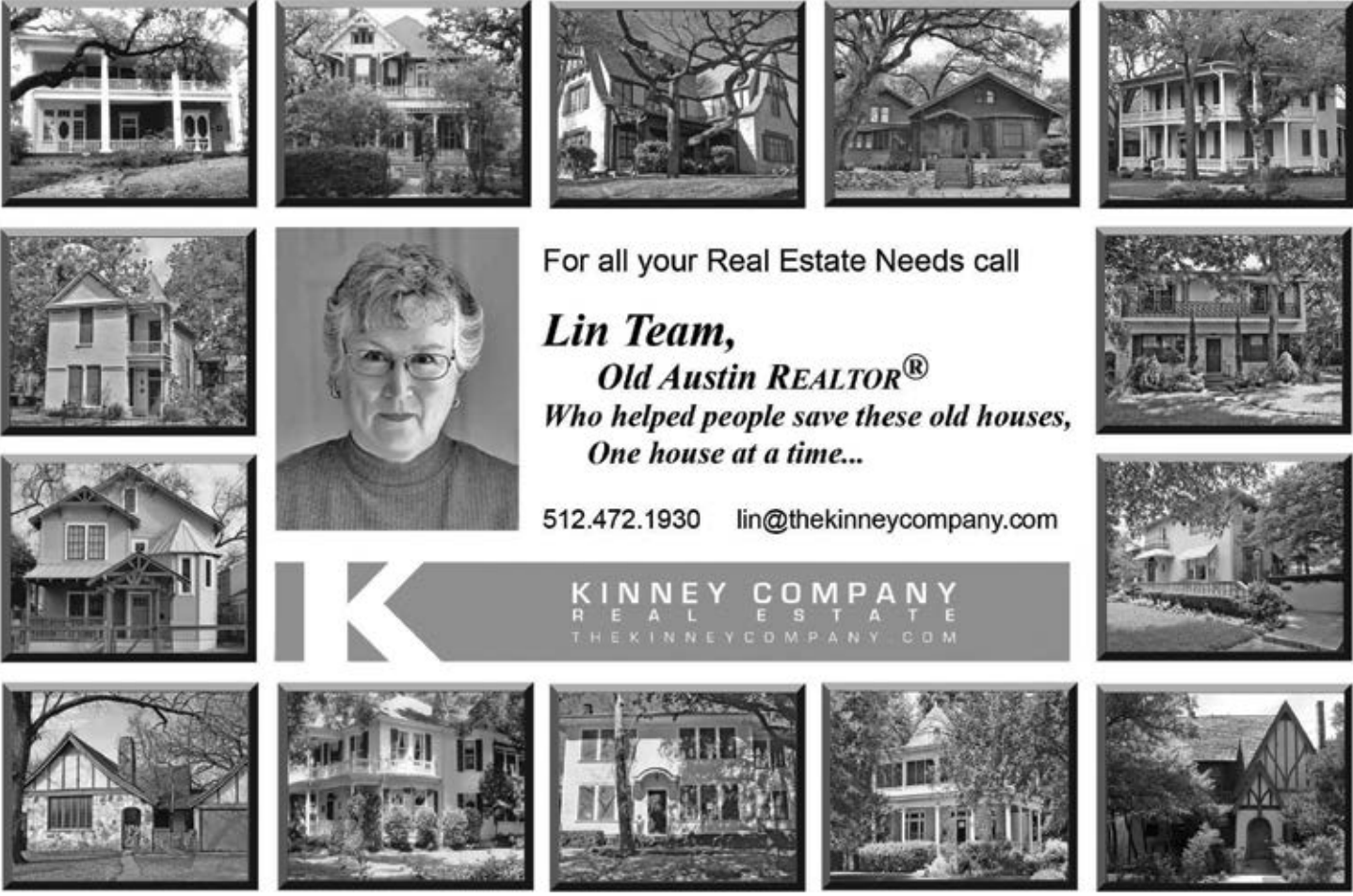
“If you are selling your home,
ask your real estate agent
to select Midtown,
a great title company
in the neighborhood.”



Midtown
Ishmael Law Firm, PC
an attorney fee office of Independence Title

512.459.1110 | www.MidtownTitle.com
3009 North Lamar Blvd., Austin, Texas 78705

Douglas Plummer
35th St. Resident and NUNA Member
Managing Director
Midtown Office of Independence Title



For all your Real Estate Needs call
Lin Team,
Old Austin REALTOR®
Who helped people save these old houses,
One house at a time...

512.472.1930 lin@thekinneycompany.com

KINNEY COMPANY
REAL ESTATE
THEKINNEYCOMPANY.COM

Your Neighborhood Specialist

realty/austin
make the move.™



4517 AVENUE G | OFFERED AT \$925,000
3 BED | 2.5 BATH | STUDY | .30 ACRES | +/-3070 SQFT
Modern, practical layout and space considerations for entertaining and living including spacious living room with high ceilings, wide open custom kitchen with storage, utility room with utility sink, bonus "flex-creative space", master suite downstairs. A rare find in Hyde Park and magical place to call home!



715 EAST 43RD | OFFERED AT \$545,000
2 BED | 2 BATH | +/- 1,319 SQFT

Enjoy this 1920s home's large front porch overlooking a quiet corner in Hancock neighborhood. Many vintage details including original windows, doors, and wood floors along with a modern bright & light open kitchen/living area. Wood burning fire place. Detached studio. Oversized 7000 + square foot corner lot with great trees. Great walkable location.

I live here, I work here

When it's time to choose a Realtor®, choose a true neighborhood expert. I provide exemplary customer service along with innovative marketing strategies and accurate, in-depth knowledge of our neighborhood and its unique homes.

Whether you are buying, selling, or investing, contact me today for a complimentary consultation.

TAMMY YOUNG

Broker Associate, GRI
Hyde Park Neighbor
512.695.6940

tammy@realtyaustin.com
tammyyoung.com



Call **512.695.6940** for all of your real estate needs.



Quick SHOPPING for
Great GROCERIES at
Affordable PRICES?

Maybe these hippies are onto something.

OUR
Locations

GUADALUPE
3101 GUADALUPE
AUSTIN TX 78705
512-478-2667

S. LAMAR
4001 S. LAMAR
AUSTIN TX 78704
512-814-2888

WWW.WHEATSVILLE.COM

OPEN DAILY: 7:30 AM - 11 PM

WHEATSVILLE
FOOD  CO-OP

He also uses his methods to weave multiple threads of a narrative together into his plays.

Other questions Tomlinson asks in his notebook include: How does polygamy work under the law? How is the dialogue you have with another person structurally related to your own internal conversations? What are the emotional and cognitive experiences of preparing for a meeting? When do you show up as yourself and when do you perform a role? Each question is explored in depth in text and corresponding hand-drawn illustrations.

There is an incarnational aspect to Tomlinson’s show at Fluent, linking in Tomlinson’s former life as a pastor. His dedication to materializing his thoughts in these notebooks is almost ritual-like. For all the ink and paper that documents Tomlinson’s journeys down various rabbit-holes of thinking, the notebooks are especially potent for what is not written but permeates their pages: the expression of spirit and a spiritual practice.



Park Day



Kitty Marchant

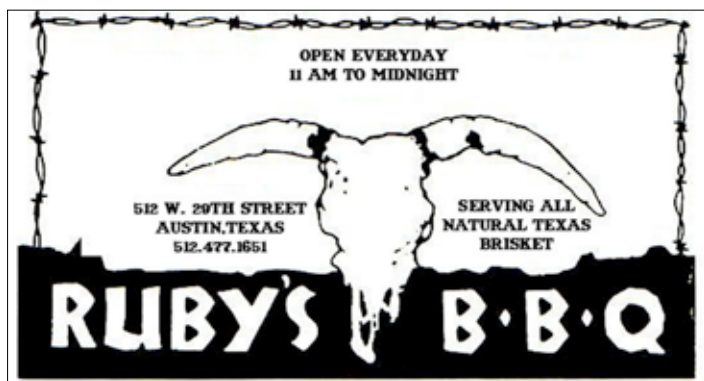
Rest In Peace, Kitty

In late February, Laurie Marchant’s beloved cat, named Kitty, was hit by a car cruising quickly up Laurel Lane. Kitty did not survive. Kitty was the beloved pet of Laurie and her two kiddos, Ava and Augie. Spunky Kitty had lived a long and happy life with the Marchants on Laurel Lane and will be missed by many.

Please take care when driving through our streets—children and pets are everywhere.

NUNA DISH

Neighbors, the NUNA Dish is taking a wee break this issue...but keep a look out for Beth Goulart Monson’s delicious neighborhood scoop in the June issue. If you have any tips, comments, or queries, etc., please email: nunadish@gmail.com | See you in June!



HYDE PARK & NORTH UNIVERSITY HOMES GALLERY



504 WEST 33RD STREET

Hemphill Park Townhomes. All brick traditional style. 3 BR, 3 BA, 2 LIV, updated kitchen, private courtyard, two-car garage. No HOA or monthly fees.

Listed at \$675,000



5114 EVANS AVENUE

Classic bungalow in North Hyde Park across from small park. 2 BR, 1BA, hardwood floors, patio. Landlord pays water and lawn maintenance. Available Jan 1st.

Listed at \$1,750/mo.



5013 AVENUE F, #B

Modern Craftsman townhome built in 2013 with high-end finishes, hardwoods, fireplace, gourmet kitchen. 3 BR, 2.5 BA, 2 LIV. Covered porch, deck, fenced yard.

Listed at \$479,900



108 WEST 32ND STREET

City Historic Landmark in Aldridge Place. Built in 1923 on double lot. 4 BR, 2.5 BA, 4 LIV, 2 DIN in main house. Detached guest quarters. Swimming pool and spa.

Listed at \$1,495,000



500 EAST 41ST STREET

Classic 1927 Hyde Park bungalow located in the heart of Hyde Park. 2 BR, 1 BA, 1 LIV, 1 DIN. Original architectural detailing throughout. Fenced yard with alley access.

Listed at \$435,000



4529 AVENUE C

Adorable 1947 cottage with 2 BR, 1 BA, 1 LIV, 1 DIN. Refinished hardwoods, faux fireplace, built-ins. Wide front porch, spacious rear deck. Detached garage.

Listed at \$399,950



513 EAST 49TH STREET

Builder's personal home designed with old world charm but offering modern amenities. Main house has 3,300 SF with 4 BR, 3.5 BA, 3 LIV plus separate 2BR, 1BA apartment.

Listed at \$995,000



305 WEST 29TH STREET

Charming two-story cottage near UT- ideal investment property in prime location. 3 BR, 2 BA. Within walking distance to UT campus, the Drag, Torchy's Tacos.

Listed at \$325,000

Demand for North University homes is stronger than ever this spring! Contact the neighborhood expert for a complimentary market analysis and customized marketing plan for your property.

Suzanne Pringle

Broker, REALTOR®

512.217.1047

suzanne.pringle@sothebysrealty.com

 Kuper

 Sotheby's
INTERNATIONAL REALTY

